

Joy to the World

♩ = 100
upbeat

tune: ANTIOCH

words: Isaac Watts
music: George Frederick Handel
arranged by Lowell Mason
arr. Don Chapman

1st time 8va

D Em7 Bm7 Asus4 D Em7 Bm7 Asus4

5

f 1. Joy to the world, the Lord is come! Let earth re - ceive her
2. Joy to the world, the Sav - ior reigns! Let men their songs em -

D Em7 Bm7 Asus4 Em7 D/F#

hymncharts.com

Arrangement ©2007, revised 2009 Hearts to God Music.

CCLI #5253304. 1-800-761-3550.

www.HymnCharts.com

This sheet music may be photocopied for church licensee only.

8

Musical staff for measures 8-10, featuring a treble clef and a key signature of two sharps (F# and C#). The melody consists of quarter and eighth notes.

King; Let ev - ery heart pre - pare Him room, And
 ploy; While fields and floods, rocks, hills and plains Re -

Piano accompaniment for measures 8-10. The right hand features chords G, Asus4, Dno3, and Gno3. The left hand provides a simple bass line.

11

Musical staff for measures 11-12, continuing the melody from the previous system.

heaven and na - ture sing, And heaven and na - ture sing, And
 peat the sound - ing joy, Re - peat the sound - ing joy, Re -

Piano accompaniment for measures 11-12. The right hand features chords Bm7 and Asus4. The left hand continues the bass line.

13

Musical staff for measures 13-14, ending with a double bar line and a common time signature 'C'.

heaven, and heaven, and na - ture
 peat, re - peat, the sound - ing

Piano accompaniment for measures 13-14. The right hand features chords D/F#, G, Bm7, and A. The left hand continues the bass line.

15

1

Vocal staff for measure 15, showing a whole note G4.

sing.

D Em7 Bm7 Asus4 D Em7 Bm7 Asus4

Piano accompaniment for measures 15-18, featuring a rhythmic pattern of eighth notes in the right hand and quarter notes in the left hand.

19

2

Vocal staff for measure 19, showing a whole note G4.

joy.

D Em7 Bm7 Asus4 D Em7 Bm7 Asus4

Piano accompaniment for measures 19-22, continuing the rhythmic pattern from the previous system.

23

Vocal staff for measure 23, showing a melodic line with eighth and quarter notes.

mf 3. No more let sin and sor - row grow, Nor thorns in - fest the

Dno3 Em7 D/F# Gno3 A G/B A/C#

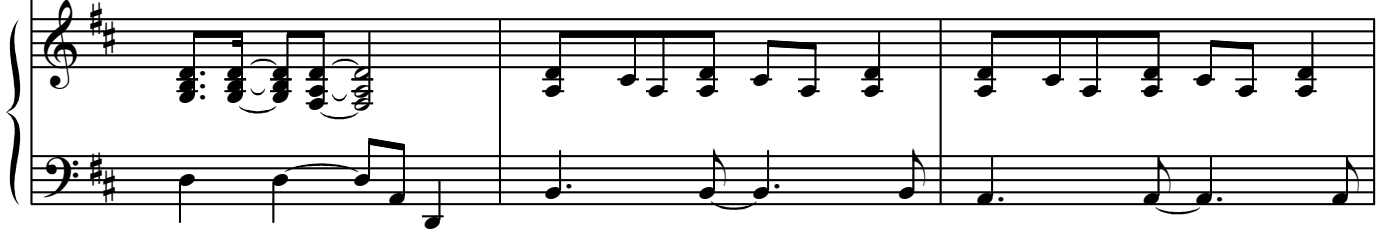
Piano accompaniment for measure 23, featuring a melodic line in the right hand and a bass line in the left hand.

26



ground; He comes__ to__ make_____ His bless - ings__ flow_____ Far

G/D D Bm7 Asus4

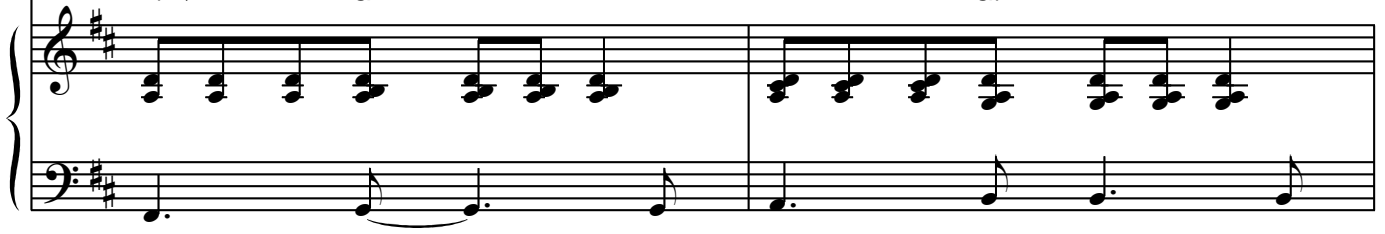


29



as the curse is__ found, Far__ as the curse is__ found, Far__

D/F# G A G/B



31



as,_____ far as,_____ the curse is found.

Gm/Bb D7/A G#dim Gmaj7 A D Em7



34

Bm7 Asus4 D Em7 Bm7 Asus4

37

f 4. He rules the world with truth and grace, And makes the na - tions

D Em7 Bm7 Asus4 Em7 D/F#

40

prove _____ The glo - ries ___ of _____ His righ - teous - ness, _____ And

G Asus4 Dno3 Gno3



won - ders of His___ love, And___ won - ders of His___ love, And___



won - - - ders, won - - - ders, of His love.

