

O Little Town of Bethlehem

♩ = 100
midtempo

tune: ST. LOUIS

words by Phillips Brooks
music by Lewis redner
arr. Don Chapman

E Esus2 Asus2 B/A E Esus2

4 5

mf 1. O lit - tle town of Beth - le - hem, how

Asus2 B/A Eno3 Asus2

7

still we see thee lie! A - bove thy deep and

F#m7 Bsus4 E Esus2 E/D

hymncharts.com

Arrangement ©2008 Hearts to God

CCLI #5253074. 1-800-761-3550

www.HeartstoGod.com

This sheet music may be photocopied for church licensee only.

10



dream - less sleep the si - lent stars go by. Yet

Asus2

F#m7

Bsus4

E



13

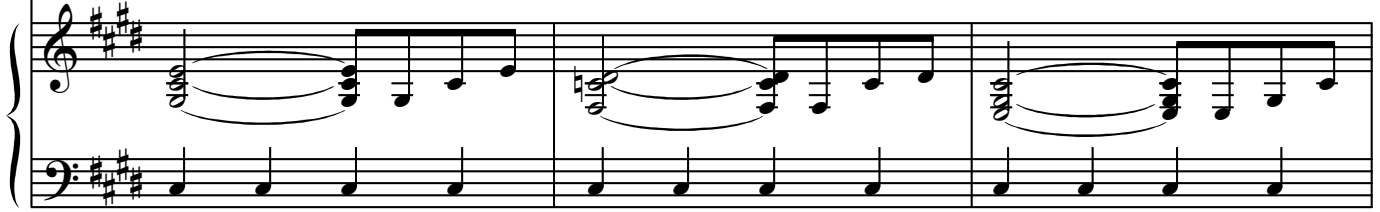


in thy dark streets shin - eth the ev - er - last - ing

C#m

Cdim/C#

C#m



16



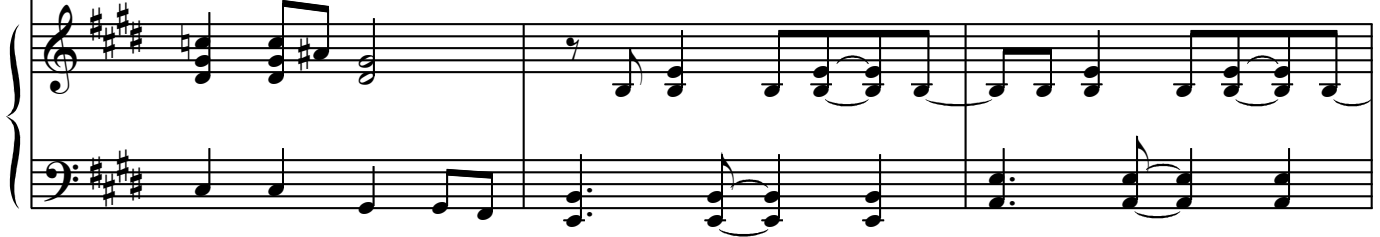
Light; The hopes and fears of all the years are

G#/C#

G#

Eno3

Asus2



19

Vocal staff for measures 19-21. The melody consists of quarter notes: G4, A4, B4, A4, G4, followed by a whole rest in measure 20 and a quarter note G4 in measure 21.

met in thee to - night.

Piano accompaniment for measures 19-21. The right hand features a melodic line with chords and a dynamic marking of *f* in measure 20. The left hand provides a bass line. Chord labels above the staff are: F#m7, Bsus4, E, and Esus2.

22

Vocal staff for measures 22-24. Measures 22 and 23 contain whole rests. Measure 24 begins with a quarter note G4.

f 2. For

Piano accompaniment for measures 22-24. The right hand features a melodic line with chords. The left hand provides a bass line. Chord labels above the staff are: Asus2, B/A, E, Esus2, Asus2, and B/A.

25

Vocal staff for measures 25-27. The melody consists of quarter notes: G4, A4, B4, A4, G4, followed by a half note G4 in measure 26 and a quarter note G4 in measure 27.

Christ is born of Mar - y, and gath - ered all a -

Piano accompaniment for measures 25-27. The right hand features a melodic line with chords. The left hand provides a bass line. Chord labels above the staff are: Eno3, Asus2, F#m7, and Bsus4.

bove, While mor - tals sleep, the an - gels keep their

E Esus2 E/D Asus2

watch of won - dering love. O morn - ing stars to -

F#m7 Bsus4 E C#m

geth - er, pro - claim the ho - ly birth, And

Cdim/C# C#m G#/C# G#

37

Vocal line for measures 37-40. The melody consists of quarter notes and half notes in a major key with three sharps (F#, C#, G#).

prais - es sing to God the King, and peace to men on

Eno3 Asus2 F#m7 Bsus4

Piano accompaniment for measures 37-40. The right hand features a rhythmic pattern of eighth notes and quarter notes, while the left hand provides a steady bass line with quarter notes.

40

Vocal line for measures 40-43. The melody is mostly whole notes and rests.

earth!

E Esus2 Asus2 B/A E Esus2

Piano accompaniment for measures 40-43. The right hand continues with a rhythmic pattern of eighth notes and quarter notes, and the left hand has a simple bass line.

43

44

Vocal line for measures 43-46. The melody consists of quarter notes and half notes.

mf 3. How si - lent - ly, how si - lent - ly, the

Asus2 B/A Eno3 Asus2

Piano accompaniment for measures 43-46. The right hand has a rhythmic pattern, and the left hand includes a *mf* dynamic marking in measure 44.

46

won - drous Gift is giv'n; So God im - parts to

F#m7 Bsus4 Eno3 E/D

49

hu - man hearts the bless - ings of His Heav'n. No

Asus2 F#m7 Bsus4 E

52

ear may hear His com - ing, but in this world of

C#m Cdim/C# C#m

55

sin, *f* Where meek souls will re - ceive Him still, the

G#/C# G# Eno3 Asus2

58

dear Christ en - ters in.

F#m7 Bsus4 E Esus2 Asus2 B/A

61

63

4. O ho - ly Child of

E Esus2 Asus2 B/A Eno3

64

Musical staff for vocal line, measures 64-66. The key signature is three sharps (F#, C#, G#) and the time signature is 4/4. The melody consists of quarter and eighth notes.

Beth - le - hem, de - scend on us, we pray; Cast

Piano accompaniment for measures 64-66. The right hand features chords and moving lines, while the left hand provides a steady bass line. Chord labels above the staff are: Asus2, F#m7, Bsus4, E, and Esus2.

67

Musical staff for vocal line, measures 67-69. The melody continues with quarter and eighth notes.

out our sin, and en - ter in, be born in us to -

Piano accompaniment for measures 67-69. Chord labels above the staff are: E/D, Asus2, F#m7, and Bsus4.

70

Musical staff for vocal line, measures 70-72. The melody includes a quarter rest in measure 70.

day. We hear the Christ - mas an - gels the

Piano accompaniment for measures 70-72. The right hand features chords with accents, and the left hand has a bass line with accents. Chord labels above the staff are: Eno3, C#m/G#, and G#.

73

great glad tid - ings tell; O come to us, a -

C#m/G# **G#** **Eno3**

76

bide with us, our Lord Em - man - u - el!

Asus2 **F#m7** **Bsus4** **E** **Esus2**

79

Asus2 **B/A** **F#m7** **Asus2** **E**