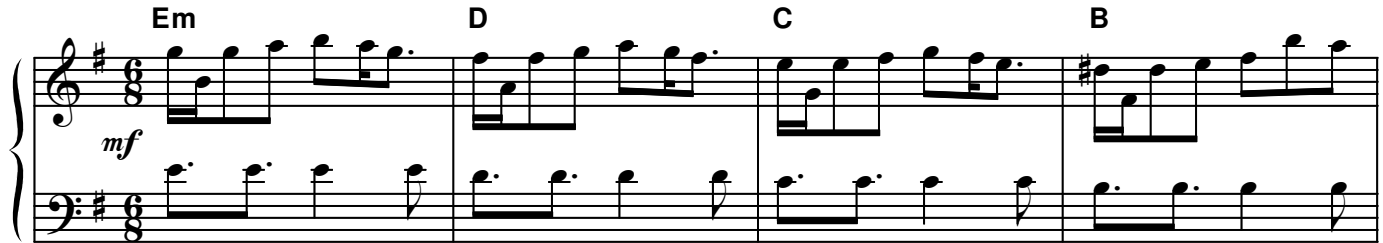


What Child Is This?

 = 72
ballad

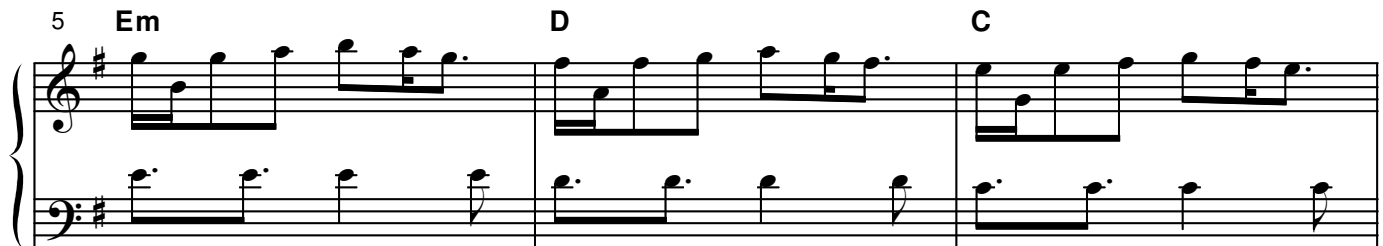
tune: GREENSLEEVES

words by William Dix
music: traditional English melody
arr. Don Chapman

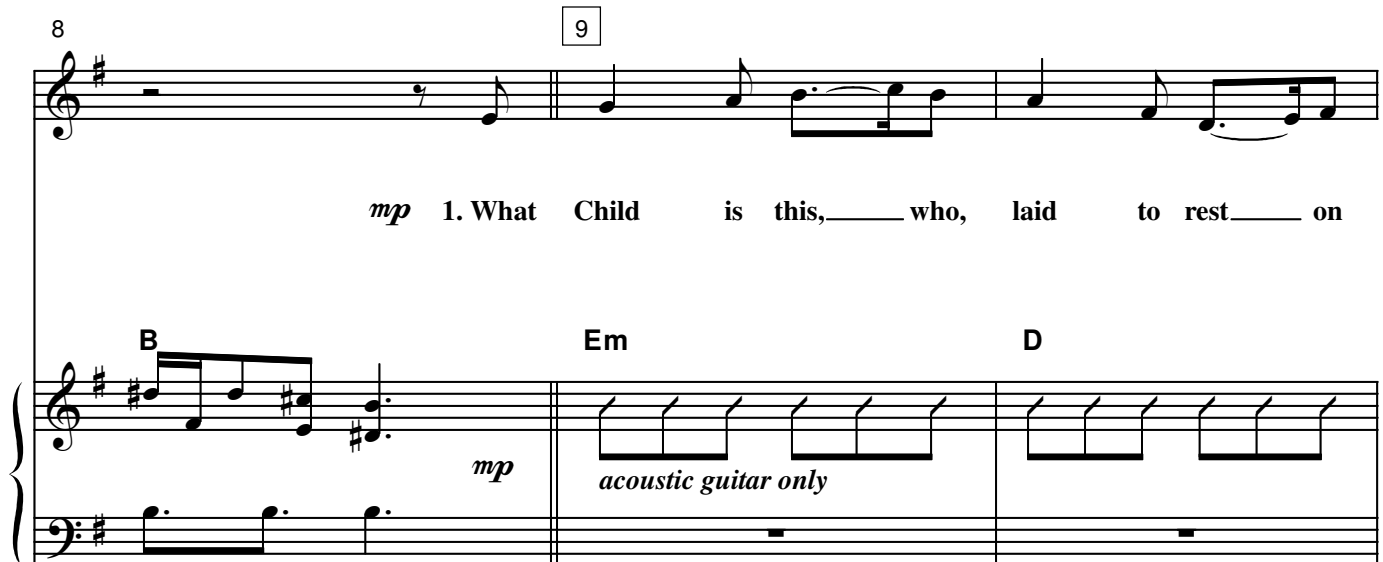


Em D C B

mf



5 Em D C



8 9

mp 1. What Child is this, who, laid to rest on

B Em D

mp acoustic guitar only

hymncharts.com

Arrangement ©2008 Hearts to God Music.

CCLI #5252453. 1-800-761-3550.

www.HymnCharts.com

This sheet music may be photocopied for church licensee only.

11

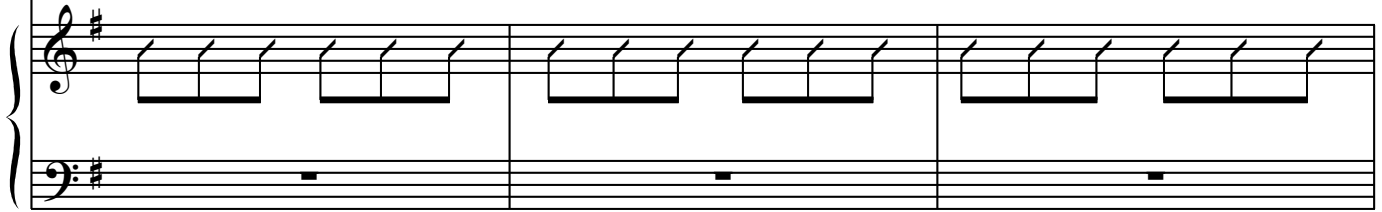


Ma - ry's lap _____ is sleep - ing? Whom an - gels greet _____ with

C

B

Em



14



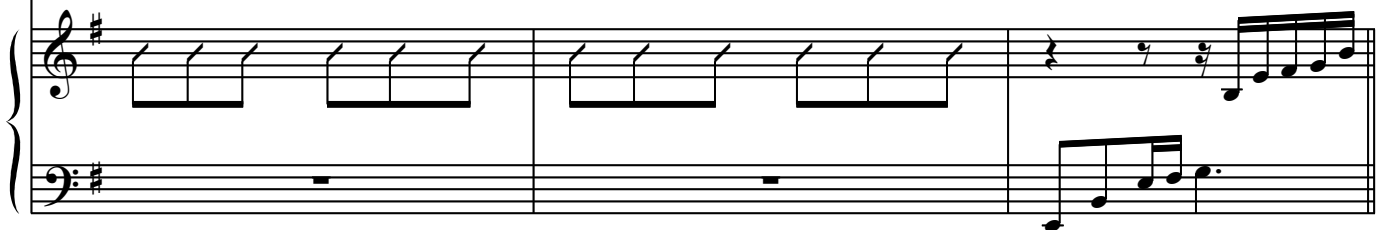
an - thems sweet, _____ while shep - herds watch _____ are keep - ing?

D

C

B

Em



17



mf This, this _____ is Christ the King, _____ Whom shep - herds guard _____ and

G

D

Em

mf



20

Musical staff for vocal line, measures 20-22. The melody starts with a quarter note G4, followed by a quarter note A4, a quarter rest, a quarter note B4, a quarter note C5, a quarter note B4, a quarter note A4, a quarter note G4, and a quarter note F4.

an - gels sing; Haste, haste, to bring Him laud, the

Piano accompaniment for measures 20-22. The right hand features chords B, G, and D. The left hand provides a simple bass line.

23

Musical staff for vocal line, measures 23-25. The melody continues with a quarter note E4, a quarter note D4, a quarter note C4, a quarter note B3, a quarter note A3, and a quarter note G3.

Babe, the Son of Ma - ry.

Piano accompaniment for measures 23-25. The right hand features chords Em, B, Em, and D. The left hand provides a simple bass line.

26

28

Musical staff for vocal line, measures 26-28. The melody starts with a quarter rest, a quarter rest, a quarter note G4, a quarter note A4, a quarter note B4, a quarter note C5, a quarter note B4, a quarter note A4, and a quarter note G4.

mf 2. Why lies He in such

Piano accompaniment for measures 26-28. The right hand features chords C, B, and Em. The left hand provides a simple bass line. A *mf* dynamic marking is present in the right hand for measure 28.

29

Musical staff for measures 29-31, featuring a treble clef and a key signature of one sharp (F#). The melody consists of eighth and quarter notes with some slurs.

mean es - tate, _____ where ox and ass _____ are feed - ing? Good

D

C

B

Piano accompaniment for measures 29-31, showing a grand staff with treble and bass clefs. The right hand plays chords and moving lines, while the left hand plays a steady bass line.

32

Musical staff for measures 32-34, continuing the melody from the previous system.

Chris - tians, fear, _____ for sin - ners here _____ the si - lent Word _____ is

Em

D

C

B

Piano accompaniment for measures 32-34, showing a grand staff with treble and bass clefs. The right hand plays chords and moving lines, while the left hand plays a steady bass line.

35

36

Musical staff for measures 35-36, including a double bar line at the start of measure 36.

plead - ing. This, this _____ is Christ the King, _____ Whom

Em

G

D

Piano accompaniment for measures 35-36, showing a grand staff with treble and bass clefs. The right hand plays chords and moving lines, while the left hand plays a steady bass line.

shep - herds guard_____ and an - gels sing; Haste, haste,_____ to

Em B G

bring Him laud,_____ the Babe,_____ the Son_____ of Ma - ry.

D Em B Em

mp 3. So bring Him in - cense,

D Em B Em

47

mp

gold and myrrh, come peasant, king to own Him; The King of kings sal-

D C B Em

va - tion brings, let loving hearts enthrone Him.

D C B Em

This, this is Christ the King, Whom shepherds guard and

G D Em

mf

Musical staff for vocal line, measures 58-60. The melody starts on a G4 note, moves to F#4, then E4, and continues with a series of eighth and quarter notes.

an - gels sing; Haste, haste, ___ to bring Him laud, ___ the

B G D

Piano accompaniment for measures 58-60. The right hand features chords and moving lines, while the left hand provides a steady bass line. Chords B, G, and D are indicated above the staff.

Musical staff for vocal line, measures 61-63. The melody continues with a series of notes, including a half note and a quarter note.

Babe, ___ the Son ___ of Ma - ry.

Em B Em

Piano accompaniment for measures 61-63. The right hand has chords and moving lines, with a *mp* dynamic marking. The left hand has a steady bass line. Chords Em, B, and Em are indicated above the staff.

Musical staff for vocal line, measures 64-66. The staff is mostly empty, indicating a rest for the vocal line.

D C B Em

Piano accompaniment for measures 64-66. The right hand has chords and moving lines, while the left hand has a steady bass line. Chords D, C, B, and Em are indicated above the staff. A note in the final measure is marked with a diamond symbol.

acoustic guitar only on last chord