

While Shepherds Watched Their Flocks

♩ = 94
ballad

tune: CHRISTMAS

words by Nahum Tate
music by George Frederick Handel
arr. Don Chapman

C Dm7 C/E Am G/B C F Cmaj7/E Dm7

mp

5 Gsus4 G C Dm7 C/E Am G/B C F Cmaj7/E Dm7

mf

9 10

mp

1. While___ shep - herds watched their flocks by___ night, All___

12



seat - ed on the ground, The an - gel of the

Fsus2 Gsus4 G G F/A G/B F/A G/B



15

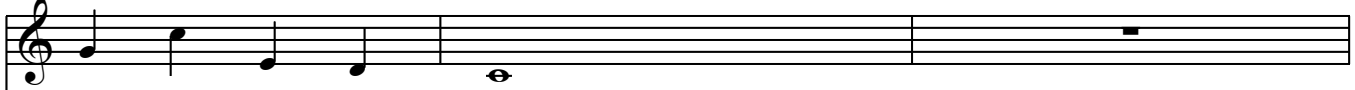


Lord came down, And glo - ry shone a - round, And

F/C C C/E F C/E Dm7 C F/C C Dm7



18



glo - ry shone a - round.

C/E F Gsus4 G C Dm7 C/E Am G/B C



Musical staff for measures 21-23, showing a treble clef with a whole rest in measure 21, followed by a half note G4 in measure 22, and a quarter note G4 in measure 23.

2. "Fear not!" said he, for
 3. "To you, in Da - vid's

F Cmaj7/E Dm7 Gsus4 G C C/B

Piano accompaniment for measures 21-23. Measure 21 has a whole rest. Measure 22 features a piano accompaniment with a melody in the right hand and a bass line in the left hand. Measure 23 continues the accompaniment with a dynamic marking of *mf*.

Musical staff for measures 24-26, showing a treble clef with a melody of eighth notes: G4, A4, B4, C5, B4, A4, G4, F4, E4, D4, C4.

might - y dread Had seized their trou - bled mind. "Glad
 town, this day Is born of Da - vid's line A

Am7 C/G Fsus2 Gsus4 G F/A

Piano accompaniment for measures 24-26, featuring a steady eighth-note accompaniment in the right hand and a bass line in the left hand.

Musical staff for measures 27-29, showing a treble clef with a melody of quarter notes: G4, A4, B4, C5, B4, A4, G4, F4, E4, D4, C4.

tid - ings of great joy I bring To you and all man -
 Sav - ior, who is Christ the Lord, And this shall be the

G/B F/A G/B F/C C C/E F C/E Dm7 C

Piano accompaniment for measures 27-29, featuring a steady eighth-note accompaniment in the right hand and a bass line in the left hand.

30

1

Musical staff for measure 30, showing a treble clef with a melody line. The notes are G4, A4, B4, C5, B4, A4, G4, and a whole rest.

kind _____ To you and all man - kind.
 sign, _____ And this shall be the sign.

F/C C Dm7 C/E F Gsus4 G C

Piano accompaniment for measure 30, showing a grand staff with treble and bass clefs. The right hand plays chords and moving lines, while the left hand plays a simple bass line.

33

2

Musical staff for measure 33, showing a treble clef with a melody line. The notes are G4, A4, B4, C5, B4, A4, G4, and a whole rest.

3. "To_____ sign. *mp* 4. "The_____

C

mp

Piano accompaniment for measure 33, showing a grand staff with treble and bass clefs. The right hand plays chords and moving lines, while the left hand plays a simple bass line.

36

Musical staff for measure 36, showing a treble clef with a melody line. The notes are G4, A4, B4, C5, B4, A4, G4, and a whole rest.

heaven - ly Babe you there shall_____ find To_____ hu - man view dis -

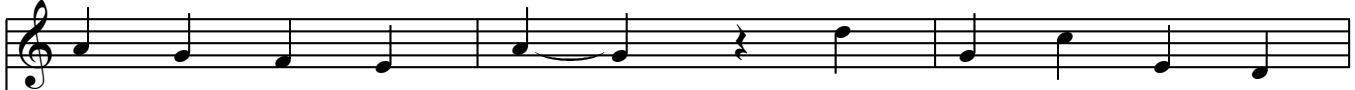
C C/B Am7 C/G Fsus2

Piano accompaniment for measure 36, showing a grand staff with treble and bass clefs. The right hand plays chords and moving lines, while the left hand plays a simple bass line.



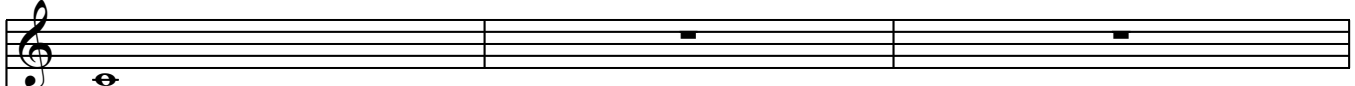
played, _____ All _____ mean - ly wrapped in swath - ing _____ bands, And _____

Gsus4 G G F/A G/B F/A G/B F/C C C/E



in a man - ger laid, _____ And in a man - ger

F C/E Dm7 C F/C C Dm7 C/E F Gsus4 G



laid."

C Dm7 C/E Am G/B C F Cmaj7/E Dm7



f 5. "All glo - ry be to God on high, And

to the Earth be peace; Good - will hence - forth from

heaven to men Be - gin and nev - er cease, Be -

57

A single vocal staff in treble clef with a key signature of two sharps (F# and C#). The melody consists of a quarter note G4, a quarter note A4, a quarter note B4, a quarter note C5, a half note D5, and a whole note E5.

gin and nev - er cease!"

Piano accompaniment for measures 57-59. The right hand plays chords and moving lines, while the left hand plays a steady bass line. Chords are indicated above the staff: D/F# (m57), G (m58), Asus4 (m59), A (m60), D (m61), Em7 (m62), D/F# (m63), Bm (m64), A/C# (m65), and D (m66).

60

A single vocal staff in treble clef with a key signature of two sharps (F# and C#). The staff is empty, indicating a rest for the vocal line in this measure.

Piano accompaniment for measures 60-62. The right hand plays chords and moving lines, while the left hand plays a steady bass line. Chords are indicated above the staff: G (m60), Dmaj7/F# (m61), Em7 (m62), Asus4 (m63), A7 (m64), and D (m65). A *rit.* marking is present under the right hand in measure 64. The piece concludes with a double bar line in measure 65.